



6th Annual

ANIMAL HEALTH, NUTRITION & TECHNOLOGY INNOVATION

USA

BOOK BEFORE
APRIL 4
& SAVE UP TO

\$700

Boston | 11 - 13 June 2024

Shaping the Future of Animal Health by Showcasing Innovations in Prediction, Prevention and Treatment

WHAT'S NEW FOR 2024?

With North America dominating the animal health market and accounting for the largest revenue share, join us in Boston and benefit from...



140+ START-UPS

from pre-revenue to recently acquired, network with the most innovative companies in the space.



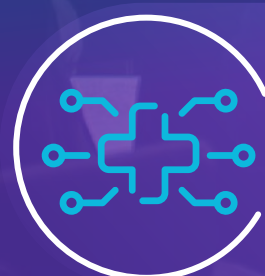
16 INNOVATION SHOWCASE FINALISTS

... all new to the AHNTI USA stage!



350+ DECISION-MAKERS

The entire U.S. animal health industry, all under one roof!



BRAND-NEW DIGITAL HEALTH DEMO ZONE



MORE NETWORKING OPPORTUNITIES THAN EVER BEFORE!

30+ dedicated 1-2-1 meeting slots!

50+ Industry Leaders Including



Ester Banque

Executive Vice President & President, U.S. Operations
Zoetis



Tim Bettington

Executive Vice President, Corporate Strategy & Market Development
Elanco



Jennifer Radosevich

Senior Vice President, Research & Innovation
Hill's Pet Nutrition



Tim Peart

President
Micro Technologies



Ashley Franciso

Head of Startup Ecosystem - North America
Google



Curtis Huttenhower

Professor of Computational Biology & Bioinformatics
Harvard T H Chan School of Public Health



Greg Geckles

Vice President, Market Insights
Independence Pet Holdings



Kimberly Simmons

Director of Global Regulatory Affairs
Clinglobal

2024 PARTNERS



AskVet



Produced by
Kisaco Research

www.animalhealtheventusa.com amy.beck@kisacoresearch.com [@AHInnovation](https://twitter.com/AHInnovation)

WELCOME

Now in its 6th year, the Animal Health, Nutrition and Technology Innovation Summit USA is the hub for connecting the most exciting start-up companies with financial investors and strategic corporate partners across North America.

Our mission is to provide the most value possible to our network through showcasing new waves of innovation whilst driving forward partnerships and investment to better serve animals, people and the planet.



More Networking Opportunities Than Ever

Maximize networking with potential partners and collaborators with 30 pre-scheduled 1-2-1 meeting slots available! Plus sign up to our CEO and Founders Forum, R&D Tearoom and/or Women In Leadership Lunch to maximize your opportunities for those important strategic conversations.



Expanded Audience

Benchmark your industry knowledge, consolidate existing relationships and expand your network with an audience of 350+ experts from across both the animal and human health industries.



Brand-New Start-Up Offerings

You asked, we listened! We've enhanced our start-up offerings to provide peer-to-peer, solution-led discussions for our network of emerging companies. This includes our Start-Up Focus Investment Roundtables, Innovation Showcase Finalist Breakfast, and CEO & Founders Forum!



Enhanced Academic Poster Presentation

Showcasing the most novel and innovative research, our academic poster presentation will have 20 available spots. It's first come first serve, so don't miss your chance to get your work in front of the leading R&D experts in the space!

[APPLY HERE](#)

GLOBAL ADVISORY BOARD



Sébastien Huron
Chairman of the Executive Board & CEO
Virbac



Aaron Schacht
Chief Executive Officer
BiomEdit



Dave Ross
Chief Executive Officer
Agri-EPI Centre



Ellen de Brabander
Executive Vice President R&D & Innovation
Elanco



Jean-Luc Michel
Senior Vice President, Head of Global Strategic Marketing
Boehringer Ingelheim



Alan MacKay
Executive Partner & Founder
GHO Capital



Rob Kelly
Senior Vice President, Commercial Leader for EURAM Region
MSD Animal Health



Jamie Brannan
Executive Vice President and Group President International Operations, Aquaculture & Global Diagnostics
Zoetis



Thomas Zerzan
President Companion Animal
Phibro Animal Health



Linda Rhodes
VMD, Ph.D.
Independent Consultant

MEET THE WHO'S WHO IN ANIMAL HEALTH



INVESTORS



ANIMAL HEALTH



EMERGING COMPANIES



PETCARE



SERVICE PROVIDERS

AgFunder, **anterra capital**, **ARCHIMED**, **BANK OF AMERICA**, **BOREALIS VENTURES**, **THE CARLYLE GROUP**, **DEVONIAN CAPITAL**, **DIGITALIS**, **FIVE SEASONS VENTURES**, **Fulcrum Global Capital**, **GHO CAPITAL**, **KKR**, **metamorphosis**, **MOUNTAIN GROUP PARTNERS**, **NOMURA**, **NOVAQUEST CAPITAL MANAGEMENT**, **PAINE SCHWARTZ PARTNERS**, **Parkwalk**, **PLUGANDPLAY**, **s2gventures**, **Seventure**, **WHITE STAR CAPITAL**

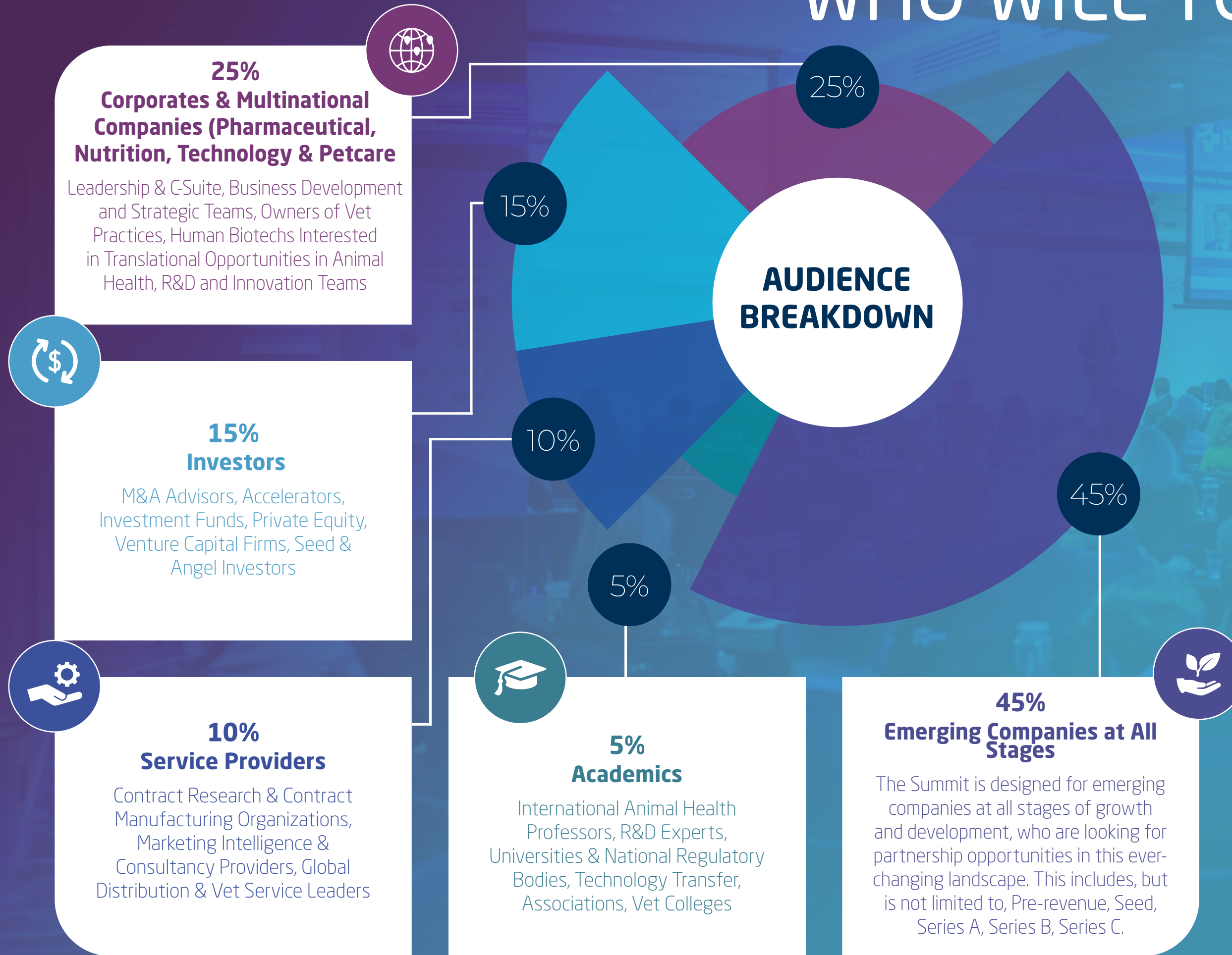
Animalcare, **BIOMEDIT**, **Boehringer Ingelheim**, **Ceva**, **clinglobal**, **covetrus**, **Dechra**, **DP DÔMES PHARMA**, **Elanco**, **HIPRA**, **HUVEPHARMA**, **IDEXX**, **Kyoritsu Seiyaku Corporation**, **MERCK Animal Health**, **MWI Animal Health**, **Phibro**, **UNITED ANIMAL HEALTH**, **vetoquinol**, **Virbac**, **ZENOAQ**, **zoetis**

272BIO, **AniV8**, **AQUINOVO**, **Bactana**, **BEE TECHNOLOGY**, **Bistro.Cat**, **ControlPoint DIAGNOSTICS**, **CURELAB VETERINARY**, **CYTOPHAGE**, **ELIAS ANIMAL HEALTH**, **GRIP MOLECULAR**, **hound**, **Invetx**, **IMPRI MED**, **Labby**, **LEAH LABORATORIES**, **MI RNA**, **mysimplepetlab**, **OSMDiagnostics**, **RELIEF ROVER**, **REPROHEALTH**, **RESILIENTBIOTICS**, **sylvester.ai**, **TORIGEN**, **VET mAb BIO**, **vidium**

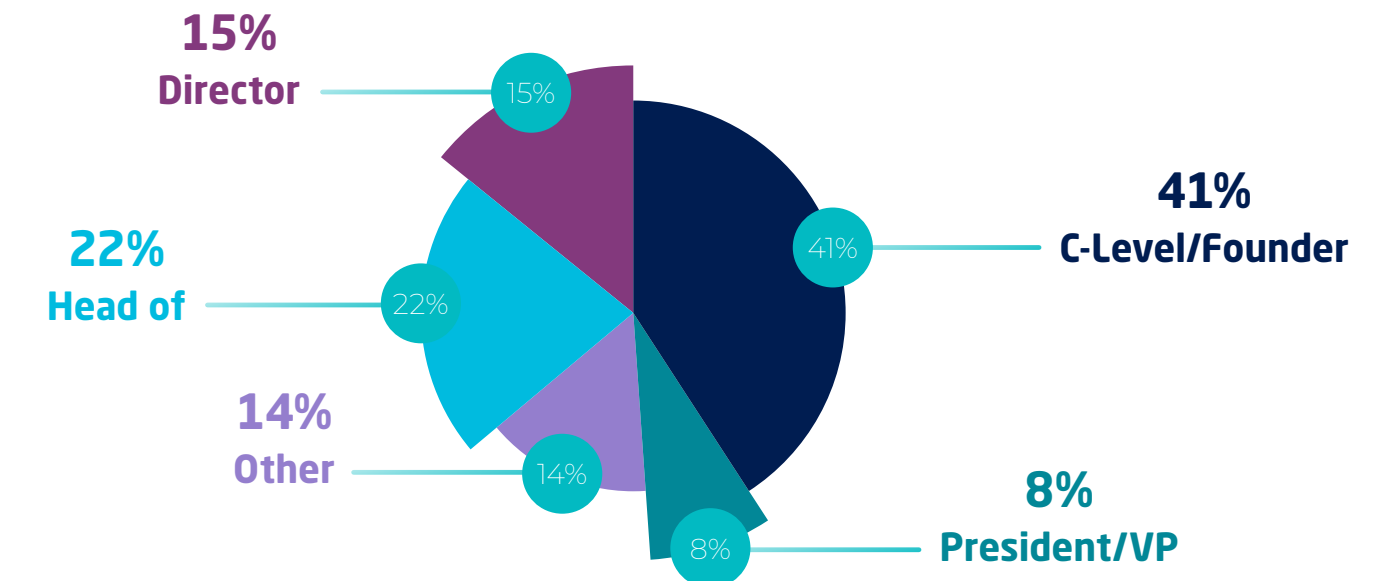
BetterVet, **embark**, **casco pet**, **General Mills**, **HIGHFIVE**, **Hills**, **kinship**, **Leap**, **MARS Petcare**, **Nestlé PURINA**, **pets app**, **petco**, **PetsCorner**, **Petfolk**, **pets at home**, **PetHub**, **PetMedix**, **PETSMART**, **PURINA**, **ROYAL CANIN**, **WellHaven**

AI ANIMAL HEALTH INSTITUTE, **BILL & MELINDA GATES foundation**, **Brakke CONSULTING**, **Cherry Tree & ASSOCIATES, LLC**, **McKinsey & Company**, **Pda**, **ACADEMICS & NPOS**, **GHENT UNIVERSITY**, **KANSAS STATE UNIVERSITY**, **RSPCA**, **TEXAS A&M UNIVERSITY**, **Tufts UNIVERSITY**, **THE UNIVERSITY OF VERMONT**, **World Organisation for Animal Health**, **WWF**

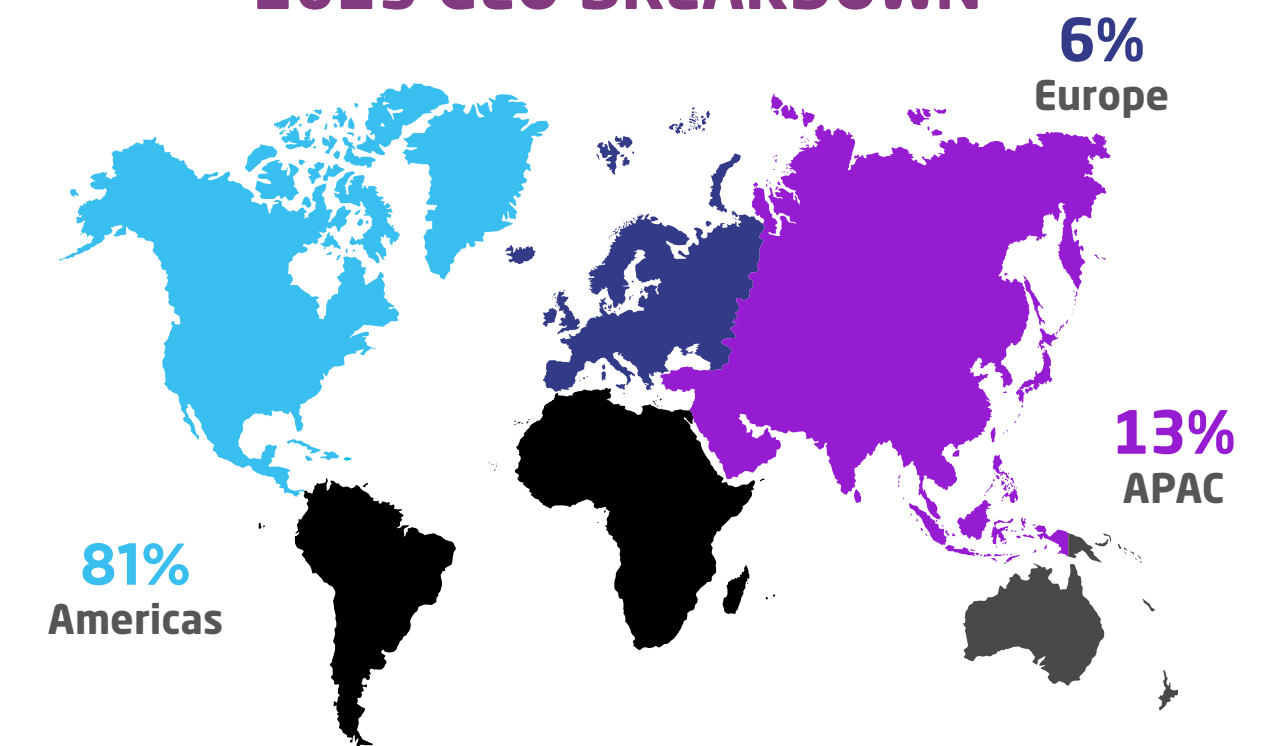
WHO WILL YOU MEET?



2023 SENIORITY BREAKDOWN



2023 GEO BREAKDOWN



THE INNOVATION SHOWCASE

For 6 years, our Innovation Showcase has been the leading platform highlighting the most innovative emerging companies in the U.S. from across the pillars of nutrition, technology, and health to present in front of the industry's most influential potential partners and collaborators.

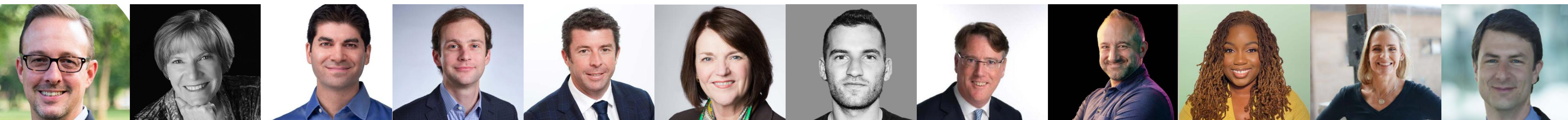
This year 16 start-ups split into early-stage and later-stage, will take to the stage to present a 5-minute lightning pitch to our audience of potential partners and collaborators across our companion animal and production animal showcases, then followed by 3-minutes of Q&A with our judging panel.

Applications close 29 MARCH 2024

[APPLY HERE](#)

[NOMINATE START-UP](#)

MEET OUR ESTEEMED SELECTION COMMITTEE IN BOSTON



Bruce Truman
Founder
BLT Technology and Innovation Group

Cindy Cole
Partner
Digitalis Ventures

Brett Wong
Principal
Anterra Capital

Dain Clare
Senior Associate
Novaquest Capital Management

Duncan Mackintosh
Senior Investment Manager
Brandon Capital Partners

Julia Stephanus
Partner
Borealis Ventures

Ellis Fried
Vice President
Vanterra Capital

Aidan Connolly
President
AgriTech Capital

Jeff Mard
Founder & CEO
Channel M, LLC

Lashonda Geffrad
Founder
Black Pet Business Network

Robin Moyle
Executive Committee Member
VANE

Alexander Petersen
Managing Director & Animal Health Lead
Corporate Finance Associates

WHY APPLY?



- Exclusive access to the Application Tips & Tricks.
- \$200 off your delegate pass.



- Pitch on the mainstage to our audience of 350+ potential partners and investors, as well as our prestigious judging panel.
- A Founders Journey interview posted on our website to increase visibility and chart your company's progress.
- 1-hour mentor session with our Start-Up Development Partner and your fellow finalists.
- Seat at our Showcase Finalists breakfast.



- Post-event interview distributed to our network of 50,000 industry leaders
- Take home our Innovation Showcase trophy!
- VIP Pass to a future AHNTI Summit.

WELCOME

WHAT'S NEW

INNOVATION SHOWCASE

AGENDA

2024 PARTNERS

REGISTER

2024 OUT-OF-PROGRAM OFFERINGS

DIGITAL HEALTH DEMO ZONE

NEW FOR 2024: With the explosion of digital health permeating through the industry, we are bringing you the **Digital Health Demo Zone**. Do not miss the opportunity to see the latest and greatest digital innovations in animal health in Boston!

Want a spot? There are 20 places up for grabs and it's up to our esteemed digital health judges. Apply **here** for your chance to display your product and innovation on the main exhibition floor!

Applications close: **May 3 2024**

May 3 2024

INAUGURAL DIGITAL HEALTH JUDGES



Neal Fishman
Distinguished Engineer and
CTO of Data-Based Pathology
IBM



Jason Scott
Founder & Managing Partner
Five Two Five



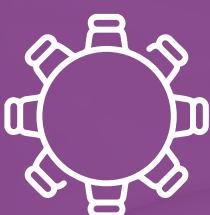
Ashley Francisco
Head of Startup Ecosystem -
North America
Google

APPLY HERE



DEI LUNCH AND LEARN

In collaboration with Black Pet Business Network, this lunch and learn will provide an insightful discussion around the importance of DEI in the workplace, animal health industry, and world as we strive to create the most inclusive and open community possible. Join this informal session to understand how you and your business can be impactful.



WOMEN IN LEADERSHIP LUNCH

In collaboration with WILMAH, this lunch is open to 80 attendees and will include a keynote presentation to celebrate the trailblazing women who are helping to drive forward the animal health industry.



CEO & FOUNDERS FORUM

Open to CEOs & Founders, this forum will allow for peer-to-peer networking and solution-led discussion as the leaders of the most cutting-edge companies join to compare common pain points and hurdles!



EXPANDED ACADEMIC POSTER PRESENTATION

With limited spots available, don't miss out on the chance to display your latest research for our whole audience to see! This year, the brand-new R&D Tearoom will take place around your posters, allowing your work to be directly in front of the leading Heads of R&D.



SHOWCASE FINALIST BREAKFAST

Exclusively created for our 16 Showcase Finalists, this breakfast will bring together the 2024 Cohort to network, knowledge share, and celebrate!

**GET THE MOST OUT OF YOUR
3 DAYS OUT OF THE OFFICE**

OUR EXECUTIVE SPEAKER LINE-UP



Ester Banque

Executive Vice President & President,
U.S. Operations
Zoetis



Cindy Cole

Partner
Digitalis Ventures



Candise Goodwin

Principal
Outlier Advisors



Bruce Truman

Founder
**BLT Technology and
Innovation Group**



Jennifer Radosevich

Senior Vice President, Research
and Innovation
Hill's Pet Nutrition



Celine Halioua

Founder & CEO
Loyal



Neal Fishman

Distinguished Engineer & CTO of
Data-Based Pathology
IBM



Kimberly Simmons

Director of Global Regulatory
Affairs
Clinglobal



Linda Rhodes

Independent Consultant



Jason Clay

Senior Vice President, Market
Transformation
World Wildlife Fund



Julia Loew

Senior Vice President,
Commercialization Services,
Companion Animal US
MWI Animal Health



Betsy Watkins

Senior Director, Business
Development
**Pegasus Laboratories, Inc.
(PRN Pharnacal)**



David Smith

Chair & CEO
Ceres Tag



Mike Seely

CEO
Native Microbials



Greg Geckles

VP, Market Insights
Independence Pet Holdings



Tim Bettington

Executive Vice President,
Corporate Strategy & Market
Development
Elanco



Ashley Francisco

Head of Startup Ecosystem – North
America
Google



Joe Spector

CEO
Dutch



Graysen Gilbraith Beinsch

Executive Director
VVCA



Juergen Horn

Founder & CEO
Invetx



Aaron Schacht

CEO
Biomedit



Lashonda Geffrard

Founder
**Black Pet Business
Network**



Mark Cushing

Founder & CEO
Animal Policy Group LLC



Mitch Frazier

CEO
AgriNovus Indiana



Ginny Siller

Director of Legislative Affairs
Animal Health Institute

OUR EXECUTIVE SPEAKER LINE-UP



Alexander Petersen
Managing Director & Animal Health Lead
Corporate Finance Associates



Julia Stephanus
Partner
Borealis Ventures



Brian Cassell
CEO
VANE



Stephen Lesser
CEO
Tairbhe Ventures



Tom Overbay
CEO
Convenant Animal Health



Brett Wong
Principal
Anterra Capital



David Haworth
Executive Vice President,
Research & Development,
Embark Veterinary & Chair,
Research Working Group, **HABRI**



Jonathan Hare
Director of Pharmaceuticals &
Therapeutics
Clinglobal



Ellis Fried
Vice President
Vanterra Capital



Aidan Connolly
President
AgriTech Capital



Jeff Mard
Founder & CEO
Channel M, LLC



Natalie Marks
Executive Committee Member
VANE



Duncan Mackintosh
Senior Investment Manager
Brandon Capital Partners



Denise Bevers
President & CEO
VETmAb Biosciences, Inc.



Chuck Latham
Founder & CEO
H&C Animal Health



Cal Lai
Chairman & CEO
Ask.vet



Mayur Patel
Vice President, Global Product Development &
R&D Portfolio Management
Elanco



Curtis Huttenhower
Professor of Computational Biology and
Bioinformatics
Harvard T H Chan School of Public Health



Andrew McKenzie
CEO
**Precision Livestock
Technologies**



Susan Groeneveld
Founder
sylvester.ai



Ira Gordon
Executive Committee Member &
Founder
VANE



Dain Clare
Senior Associate
**Novaquest Capital
Management**



Tim Peart
President
Micro Technologies



Robin Moyle
Executive Committee Member
VANE



Jason Scott
Founder & Managing Partner
Five Two Five

7:45 am

Registration Opens

8:40 am

Opening RemarksAmy Beck, Head of Content: AHNTI, [Kisaco Research](#)

8:45 am

Exclusive Keynote Presentation with Ester Banque, Executive Vice President and President, U.S. Operations, Zoetis*We are delighted to welcome Ester Banque to the AHNTI stage for the very first time, to open our 6th iteration with a compelling keynote address.***zoetis**

9:05 am

Investment Landscape: An Overview of the 2023 Market, and Predictions for 2024 and Beyond

In 2023, we saw a decline in animal health investment deals and acquisition movement. However, it is imperative that we maintain the state of the industry from a progress perspective.

- Where are the current gaps in investment? How did H1 of 2024 differ?
- Discover what large strategic companies are looking for in their next prospective partner
- How could we learn from the strong M&A environment and investment landscape within human health?

Moderator: Cindy Cole, Partner, [Digitalis Ventures](#)**Mitch Frazier**, Chief Executive Officer, [AgriNovus Indiana](#)**Alexander Petersen**, Managing Director and Animal Health Lead, [Corporate Finance Associates](#)

9:50 am

The Growth of the Antibody Market: A New Category of Products

As the demand for companion animal treatment offerings increases, the antibody market is rapidly expanding.

- Dissecting the current state of the antibody market, we will deep dive into tangible examples of animal health in human health and explore how the likes of gene therapy innovations and vaccine therapeutics disrupt this market.

Denise Bevers, President & CEO, [VETmAb Biosciences, Inc.](#)**Juergen Horn**, Founder & CEO, [Invetx](#)

10:30 am

Morning Break & Pre-Scheduled 1-2-1s

11:30 am
Keynote Presentation: Digital Transformation Through Personalized Care

11:50 am
Companion Animal Innovation Showcase

The showcase is a unique opportunity for emerging companies with amazing technology to present in front of the industry's most influential figures and investors. 8 companion animal focused start-ups and hand-picked by the Selection Committee, introduce themselves, their innovations, and their achievements on the main stage in a 5-minute lightning pitch. This year, our finalists will be presenting products across nutrition and microbiome, diagnostics and technology, and science and therapeutic areas.

APPLY HERE

NOMINATE START-UP

Bruce Truman, Founder, **BLT Technology and Innovation Group**

Cindy Cole, Partner, **Digitalis Ventures**

Brett Wong, Principal, **Anterra Capital**

Dain Clare, Senior Associate, **Novaquest Capital Management**

Duncan Mackintosh, Senior Investment Manager, **Brandon Capital Partners**

Julia Stephanus, Partner, **Borealis Ventures**

Ellis Fried, Vice President, **Vanterra Capital**

Aidan Connolly, President, **AgriTech Capital**

Alexander Petersen, Managing Director and Animal Health Lead, **Corporate Finance Associates**

1:00 pm
Lunch & Pre-Scheduled 1-2-1 Meetings

1:00 pm
Women in Leadership Lunch



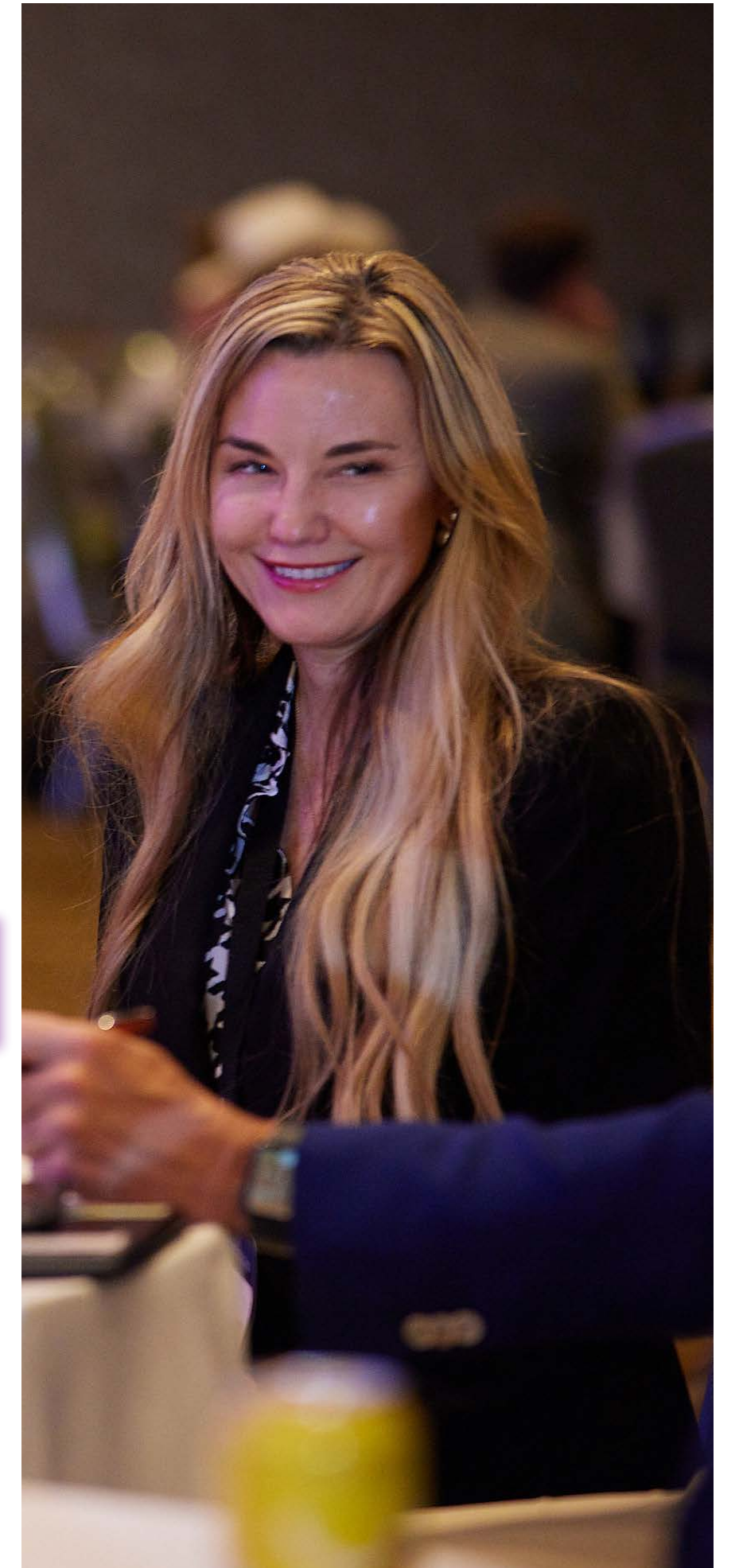
In collaboration with WILMAH, this lunch is open to 80 attendees and will include a keynote presentation to celebrate the trailblazing women who are helping to drive forward the animal health industry.

Julia Loew, Senior Vice President, Commercialization Services, Companion Animal, U.S. **MWI Animal Health** and Chairperson, **WILMAH**

1:40 pm - 2:00 pm
Technical Insight Session in Collaboration with BiomEdit
Aaron Schacht, Chief Executive Officer, **BiomEdit**



BIOMEDIT



DIGITAL

2:10 pm

Precision Livestock Farming: Leveraging Technology to Support Efficiency and Productivity

- How can we best position ourselves to meet consumer demands and preferences, whilst ensuring affordability?
- What role does each part of the supply chain play in this?
- How is automation and AI being leveraged to drive forward productivity? Who and how are they adopting this in production environments?

Moderator: Andrew McKenzie, CEO, **Precision Livestock Technologies**

David Smith, Chair & CEO, **Ceres Tag**

2:50 pm

The Shifting Veterinarian-Client-Patient Relationship: New Face of Connected Care

With the increased adoption of telemedicine across the companion animal market, the debate of the establishment of a VCPR persists.

- How can we ensure maintained quality of care whilst boosting access so vastly?
- How do VCPR laws vary across the U.S.?
- What does the future of virtual care look like?

Moderator: Bruce Truman, Founder, **BLT Technology and Innovation Group**

Mark Cushing, Founder & CEO, **Animal Policy Group**

Joe Spector, Founder & CEO, **Dutch Vet, Inc.**

INDUSTRY INSIGHTS

2:10 pm

The Future of Consumer Spending in the Petcare Market

Petcare spending has been seen to grow exponentially over the last 50 years, even in the face of recession.

- Where are consumers willing to invest?
- With a strong understanding of consumer needs, willingness, and ability to spend, how can we innovate accordingly?
- How can we boost access to products and care for pet parents, and what role does technology play in this

Moderator: Candise Goodwin, Principal, **Outlier Advisors**

Greg Geckles, VP, Market Insights, **Independence Pet Holdings**

Chuck Latham, Founder & CEO, **H&C Animal Health**

2:50 pm

The Role of the Microbiome in Health and Disease

This session will deep dive into the scientific opportunities in companion animal microbiome research, exploring the synergies with human health.

- How does this influence healthspan and lifespan?
- How can we leverage companion animal data for human health?
- Is there opportunity for genetic improvement through leveraging the microbiome information?

Jennifer Radosevich, Senior Vice President, Research and Innovation, **Hill's Pet Nutrition**

Curtis Huttenhower, Professor of Computational Biology and Bioinformatics, **Harvard T H Chan School of Public Health**

Mike Seely, CEO, **Native Microbials**



3:30 pm
**Afternoon Break &
 Pre-Scheduled 1-2-1s**

3:30 pm
CEO & Founder Forum

Exclusively for CEOs & Founders, this forum will allow for peer-to-peer networking and solution-led discussion as the leaders of the most cutting-edge companies join to compare common pain points and hurdles!

3:30 pm
R&D Tearoom

Exclusively for Heads of Research & Development, this private networking session will allow for peer-to-peer discussion and network building, focused on the newest innovations and expanding pipelines of their relevant companies. There will also be the opportunity to view our 2024 Academic Poster Presentations and discuss the insights with those who brought them together.

4:30 pm

Production Animal Innovation Showcase

The showcase is a unique opportunity for emerging companies with amazing technology to present in front of the industry's most influential figures and investors. 8 production animal focused start-ups and hand-picked by the Selection Committee, introduce themselves, their innovations, and their achievements on the main stage in a 5-minute lightning pitch. This year, our finalists will be presenting products across nutrition and microbiome, diagnostics and technology, and science and therapeutic areas.

Bruce Truman, Founder, **BLT Technology and Innovation Group**

Cindy Cole, Partner, **Digitalis Ventures**

Brett Wong, Principal, **Anterra Capital**

Dain Clare, Senior Associate, **Novaquest Capital Management**

Duncan Mackintosh, Senior Investment Manager, **Brandon Capital Partners**

Julia Stephanus, Partner, **Borealis Ventures**

Ellis Fried, Vice President, **Vanterra Capital**

Aidan Connolly, President, **AgriTech Capital**

Alexander Petersen, Managing Director and Animal Health Lead, **Corporate Finance Associates**

[APPLY HERE](#)

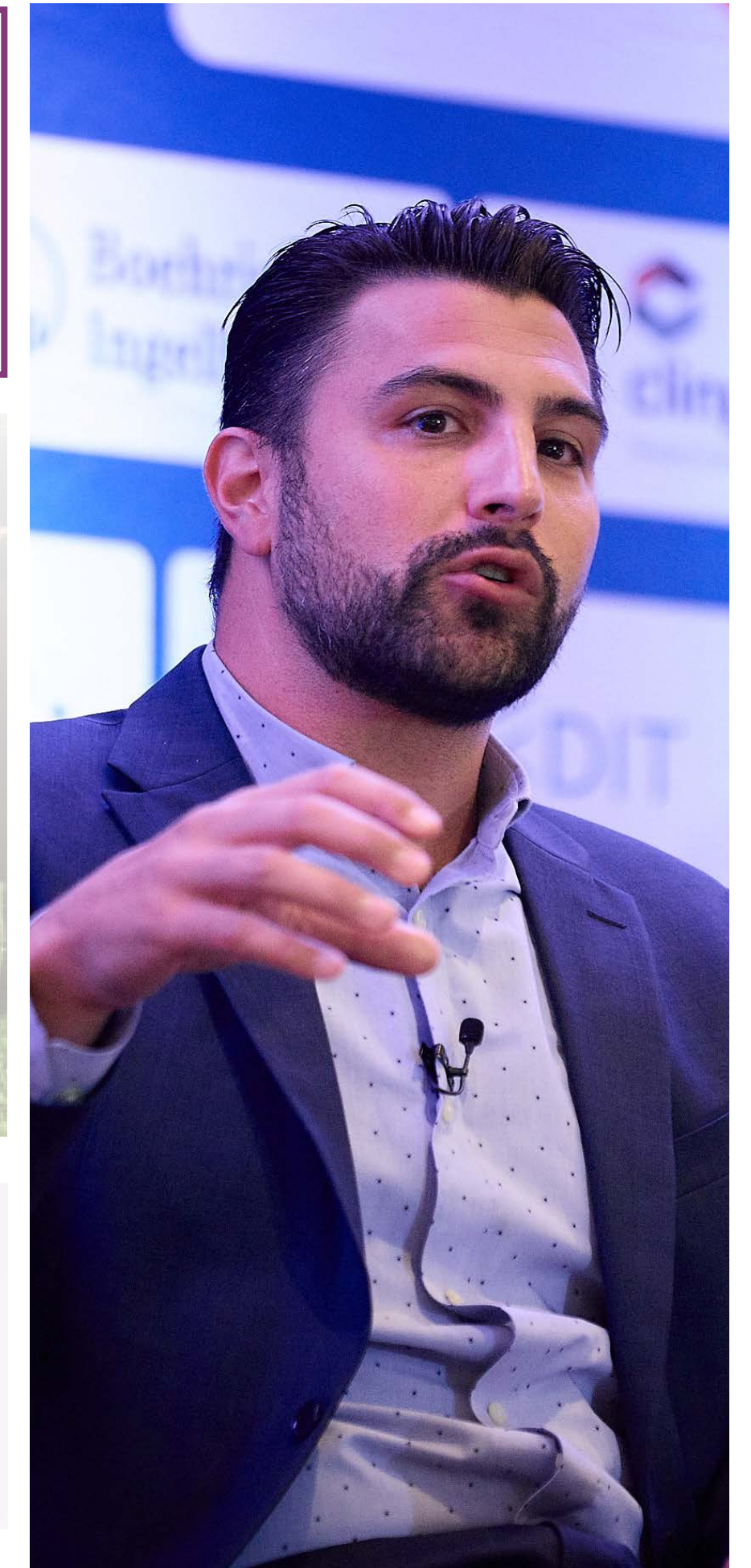
[NOMINATE START-UP](#)

5:40 pm

Closing Remarks

6:00pm - 7:00pm

Welcome Networking Reception



8:00 am
Registration Opens

8:00 am
Showcase Finalist Breakfast

Open to the 16 Innovation Showcase Finalists. Come together for a sit-down breakfast with the other finalists of our 2024 USA cohort to expand your network and knowledge share with other companies at a similar stage in their innovation journey!

8:45 am
Opening Remarks & Announcement of the Innovation Showcase Champions

Amy Beck, Head of Content: AHNTI, [Kisaco Research](#)

8:50 am
Headline Partner: Opening Plenary Session

9:30 am
Human Animal Translation: Models for Therapies in Human Development

Whilst we are witnessing a stagnation of innovation and capital flowing through the animal health industry, the human health market continues to thrive.

- How can human biotechnology provide much-needed innovation to the evolving animal health market?
- In contrast, how can animal models be used for the advancement of therapies in human development?

Duncan Mackintosh, Senior Investment Manager, [Brandon Capital Partners](#)

Linda Rhodes, [Independent Consultant](#)

Celine Halioua, Founder & CEO, [Loyal](#)

David Haworth, Executive Vice President, Research & Development, [Embark Veterinary](#) and Chair, Research Working Group, [HABRI](#)

10:10 am
The Role of the Industry in Tackling Climate Change and The Importance of Collaboration in Achieving This

Scene Setter: Jason Clay, Senior Vice President, Market Transformation, [World Wildlife Fund](#)

Ginny Siller, Director of Legislative Affairs, [Animal Health Institute](#)



10:50 am
Morning Break & Pre-Scheduled 1-2-1s

11:50 am
Distribution Evolution: Delivering Products to Pet Owners and Vets

When optimizing the manufacturing and distribution journeys along the supply chain, multiple factors must be considered to achieve ultimate efficacy and sustainable processes.

- How do you locate the right partner and go-to-market strategy?
- Where is the line between sustainable and scalable?
- How do political, economic, and social factors impact this process?

Julia Loew, Senior Vice President, Commercialization Services, Companion Animal, US, **MWI Animal Health**
Tim Peart, President, **Micro Technologies**

12:30 pm
From Concept to Commercialization: Putting the Puzzle Pieces Together

- * What are the top elements to consider on your journey to commercialization?
- * Which route is the right fit for your business?
- * Which potential partners should you be seeking to ensure maximum profitability and success?

Join this session to hear from experts across the entire journey as they discuss key pain points from financial timelines and manufacturing queries to regulatory hurdles and clinical trial stability.

Betsy Watkins, Senior Director, Business Development, **Pegasus Laboratories, Inc. (PRN Pharmacal)**
Tom Overbay, CEO, **Convenant Animal Health**
Mayur Patel, Vice President, Global Product Development and R&D Portfolio Management, **Elanco**
Kimberly Simmons, Director of Global Regulatory Affairs, **Clinglobal**

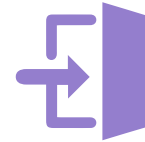
1:10 pm
Lunch & Pre-Scheduled 1-2-1 Meetings

1:20 pm - 2:00 pm
DEI Lunch and Learn
 Lashonda Geffrard, Founder, **Black Pet Business Network**



2:15 pm

PARTNERING & INVESTMENT ROUNDTABLES



Understanding Exit Strategies & Calibrating Risk



Building an Advisory Board: What to Look for in an Advisor

Ira Gordon, Executive Committee Member & Founder, **VANE**

Natalie Marks, Executive Committee Member, **VANE**



Deep Dive: From Concept to Commercialization

3:00 pm

Access to Care: How is Artificial Intelligence Fundamentally Changing This?

With technology accelerating as game-changing rather than incremental, a re-education of the benefits and use cases of AI is important.

* How can each sector of the ecosystem be a part of this profound shift?

* How is AI boosting access to care?

* How has human health previously bridged the technology use gap?

Susan Groeneveld, Founder, **sylvester.ai**

Graysen Gilbraith Biensch, Executive Director, **Veterinary Virtual Care Association**

3:40 pm

The Life Cycle of an Investment

• Why and how are different types of investors so important? What is the benefit of each?

• What does each stage of an investment look like for a founder? What about from their perspective?

• What are investors looking for in an attractive prospect?

Julia Stephanus, Partner, **Borealis Ventures**

Natalie Marks, Executive Committee Member, **VANE**

Brian Cassell, CEO, **VANE**

4:20 pm

Closing Remarks

Amy Beck, Head of Content: AHNTI **Kisaco Research**

4:30 pm

End of Conference

2:15 pm

INDUSTRY DEEP DIVE ROUNDTABLES



The Future of Chronic Condition Care

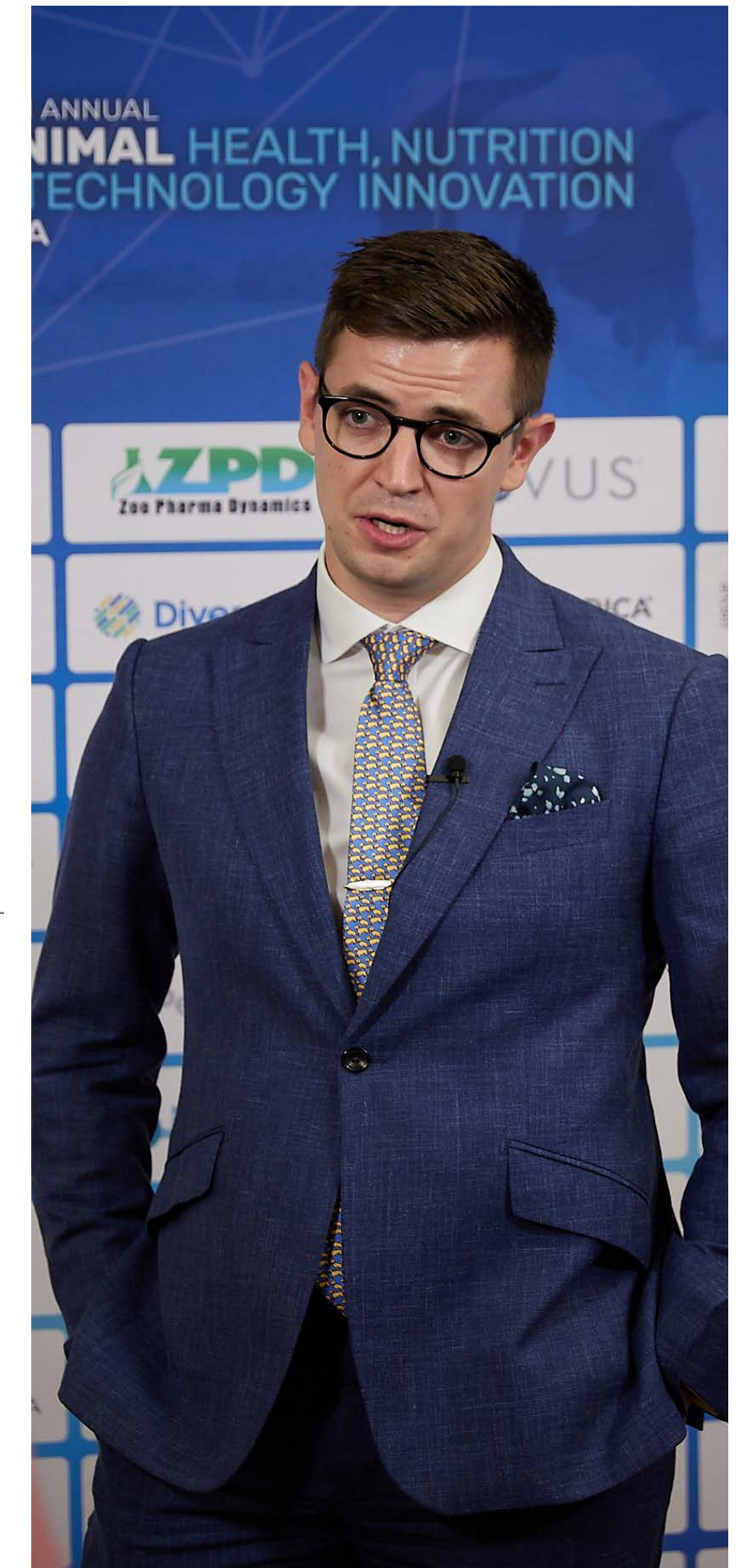


BiomEdit Deep Dive

Aaron Schacht, Chief Executive Officer, **BiomEdit**



Next-Generation Diagnostics

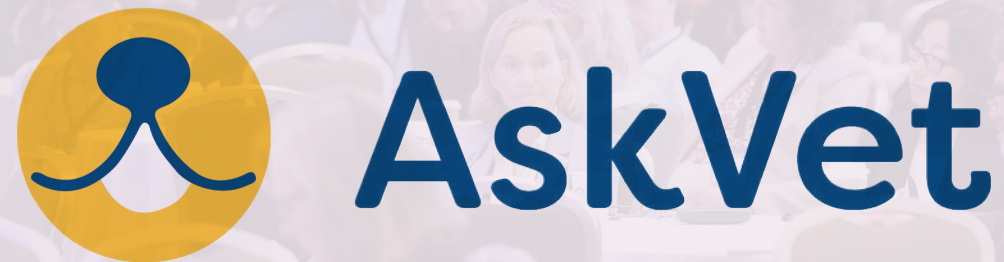


10:00 am - Workshop Registration Opens

11:00 am - 1:00 pm Workshop 1:

The Future of AI: Applications and Opportunities

In Collaboration With:



11:00 am - 1:00 pm Workshop 2:

The Future of Parasiticides

Prepare your business for the future of antiparasitic treatment as we host a deep dive into the current challenges facing the industry and map out our predictions for 2024 and beyond, including:

- What new approaches will allow the safe and effective control of parasites?
- What are the major factors that will shape the future of this field?
- How is the industry going to meet this challenge?

1:00 pm - 2:00 pm - Workshop Attendee Lunch: Grab & Go

2:00 pm - 4:00 pm Workshop 3:

Startup Workshop: Building a Pitch: Red and Green Flags

Join this interactive workshop to equip yourself with the most effective pitch technique possible. As we discuss:

- The common mistakes made by founders when building and presenting a pitch?
- The most desirable assets investors look for when assessing an opportunity?

2:00 pm - 4:00 pm Workshop 4:

From Concept to Commercialization: The Need to Knows

- What are the top elements to consider on your journey to commercialization?
- Which route is the right fit for your business?
- Which potential partners should you be seeking to ensure maximum profitability and success?

4:30 pm - 5:30 pm Pre-Scheduled 121 Networking

5:30 pm - 7:00 pm Pre-Day Drinks Reception



PARTNERING OPPORTUNITIES

Based on your objectives, we can create bespoke packages designed specifically for you. From presenting your expertise on the main stage to hosting exclusive networking drinks, you can partner with us to showcase your brand and make valuable new connections. Opportunities predominantly lie in 3 main categories:

THOUGHT LEADERSHIP

- Be seen as a thought leader in front of an engaged audience of animal health decision makers
- Deliver a keynote address to the whole audience
- Appear alongside your peers in a panel discussion
- Host a workshop to deep dive into key topics

BRANDING

- Enhance your networking experience by having a brand presence at the event
- Meet with our audience to forge new potential partnerships and build existing relationships
- Exhibit to be seen as a key partner
- Have your brand on every lanyard

NETWORKING

- Host private hospitality to ensure you have your key targets to yourselves
- Exclusively host our Executive Leader Dinner
- Closed room breakfasts and lunches offer 1:1 time with a room of your ideal prospects

BOOST YOUR BRAND

in front of the full animal health value chain



“AHNTI USA is a well-organized event attracting the world’s top animal health and nutrition companies, startups, investors, and service providers.”

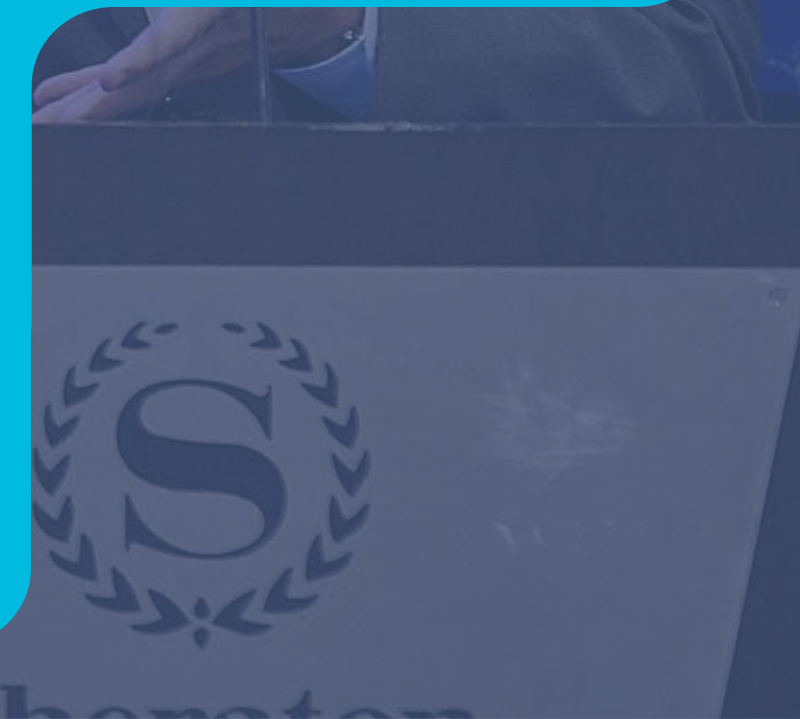
Emily Aston, Director, Business Development, Zoetis

SCOUT OUT NEW POTENTIAL PARTNERSHIPS

whilst consolidating current relationships

BE SEEN AS A THOUGHT LEADER

in front of an audience of over 350 animal health decision makers



GET IN TOUCH TO LEARN MORE ABOUT HOW YOU CAN GET INVOLVED



Stephen Swarray

Commercial Partnerships Director
swarray@kisacoresearch.com



Clare Brewster

Commercial Partnerships Director
clare.brewster@kisacoresearch.com

PRICING

PASS TYPE	SUPER EARLY BIRD UNTIL APRIL 5	STANDARD RATE
Showcase Applicant Only available to companies that have applied to present at the Innovation Showcase in 2024	\$1199	\$1799
Emerging Companies & Start Ups, Academics, Charities, Veterinary Practices, Angel and VC Investors For Start-Ups with under £4m in Annual Revenue Please note: Those offering consultancy or market intelligence services do not qualify for this rate	\$1399	\$1999
Delegate Health, Nutrition and Tech Companies (under £100m in annual revenue)	\$1999	\$2599
Multinationals & Service Providers CROs, CMOs, Consultants, M&A Advisors, Private Equity, Incubators, Accelerators and Distributors and Companies over £100m in annual revenue	\$2799	\$3499

Interested in a dedicated meeting table?
 Have your meetings come to you with a permanent space throughout the conference.

- Standard meeting table to seat 4
- Company name sign provided
- Location subject to final floorplan

GET IN TOUCH TO FIND OUT MORE

REGISTER HERE

Team discounts cannot be combined with Early Bird Pricing or any other discount or offer. If you have any questions about your registration, please call us on +44 (0)20 3696 2920.

Payment Terms: Please note a \$79 processing fee will apply to any invoices requested. All Prices are in USD. All Early Bird discount prices, including Group Discounts, must be paid in full by deadlines provided above

QUESTIONS? Please email amy.beck@kisacoresearch.com